

# Welcome to Q3 Academy Great Barr



“Q3 Academy Great Barr serves its community well. Relationships between students and teachers are strong and based on mutual respect. Students achieve well including those with special educational needs and/or disabilities. High numbers of students progress successfully on to higher education, apprenticeships, and employment”. *Ofsted, 2022*

# Mr Bury

Headteacher



A photograph of a female teacher with blonde hair and glasses, wearing a black patterned shirt, sitting at a desk. She is looking towards a male student with dark hair, wearing a dark suit jacket and a white shirt. They are both looking down at a book or document on the desk. A blue water bottle is visible on the desk. The background shows a classroom or office setting with a window and some equipment.

# Our Educational Philosophy

First and foremost we want every child to feel happy and excited about coming to the Academy.

Only when each child feels secure and comfortable can we challenge them to grow and learn together.



We want our students to return home telling their families of the memorable exciting learning experiences they have enjoyed; experiences that make it easier to recall the detail necessary for exam success and experiences that develop their character as much as their academic potential.



Our passion is helping young people to flourish and become confident capable adults ready for the world ahead.





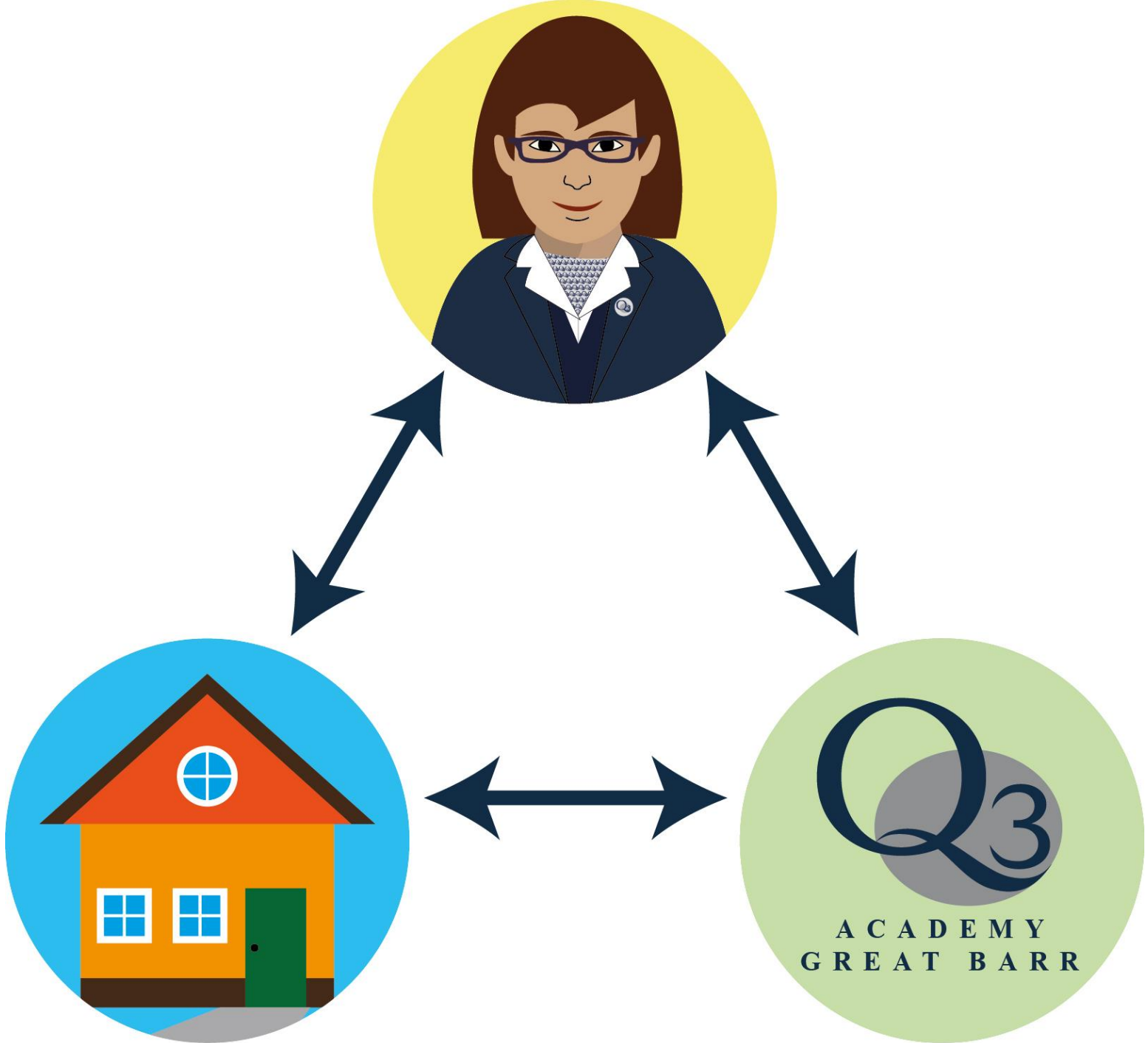
“Many students attend the impressive range of opportunities and clubs on offer...There are also opportunities for students to develop their character and leadership skills.”

*Ofsted, 2022*

# Miss Bloomfield

Head of Year 7





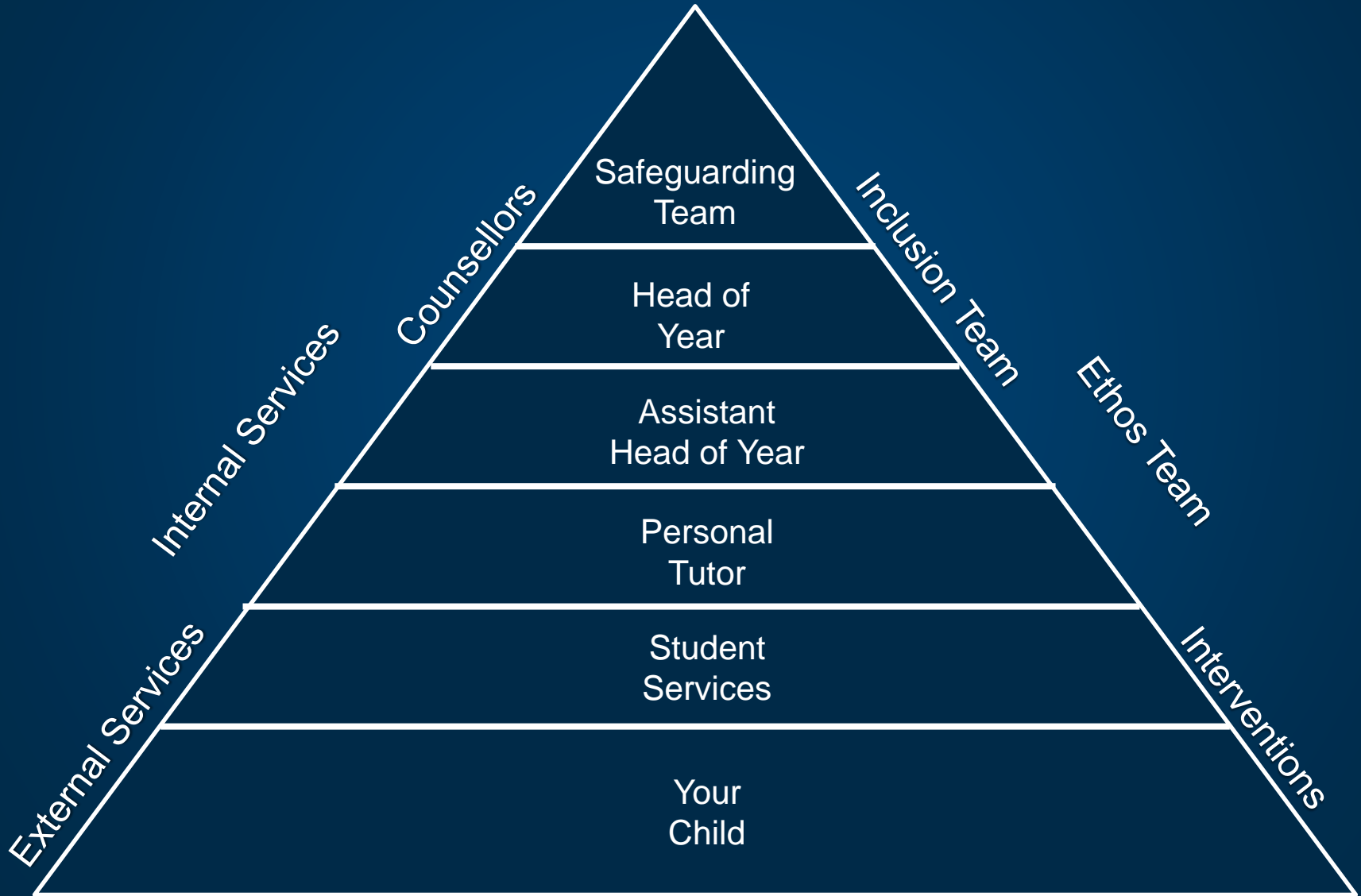


# We ask you, as parents/carers...

- ✓ Ensure your child is punctual to the Academy and here every day;
- ✓ To fully support our Business Dress expectations;
- ✓ To play an active role in your child's learning;
- ✓ To attend key events;
- ✓ To comply fully with Q3 Academy Great Barr rules and policies.

A strong partnership is the key to success!

# Layers of support




# Layers of support



**Operation Encompass** is a Police and Education early intervention safeguarding partnership that supports children and young people exposed to Domestic Abuse.

It aims to ensure that the Academy is notified in a timely manner of any Domestic Abuse incident where a child/children is are present or registered at the address. We can then check-in with the child/children to coordinate any necessary support.



“Students know who to talk to in the Academy if they have concerns. Leaders ensure that students get the support and information they need to help them keep safe, including when online.”

*Ofsted, 2022*

# Business Dress



- Lanyard with ID badge worn at all times
- Blazer
- Tie or cravat
- Black shoes (leather/polishable)
- Tailored trousers or skirt
- White shirt
- Academy jumper (optional)
- Black/Navy socks or tights
- A practical bag to carry equipment and books e.g. rucksack

# Dressed for success



# Banned Items





# Equipped for Learning

All students need to be fully equipped for lessons.



# Ready to Learn

All students need to wear full Academy Sports Kit for **every** Wellbeing Active lesson even if they have an injury and are not taking part in any physical elements of the lesson.



# Partnership Agreement

Read, Respect, Comply



“Leaders have set out clear expectations for students’ conduct and behaviour. These expectations are well understood by students and consistently applied by staff. Students are consistently **Ready, Respectful, and Responsible**”.

*Ofsted, 2022*



# Attendance and Punctuality

It is your responsibility to notify the Academy of any absences prior to 8:30am on each day of absence. If your child is absent and no reason is provided you will receive a text message and/or a phone call.

Our attendance team will also conduct unannounced home visits to visit students and families.

You may also receive a letter for any unexplained absence or for poor attendance. You will be asked to attend a meeting with the Attendance and Welfare Manager if attendance continues to decline.

Any absence due to medical issues needs to be supported with medical evidence.

Persistent poor attendance will lead to prosecution. This can include court appearance, fine and possibly a custodial sentence if it is a repeat offence.

# Attendance and Punctuality

If your child has to attend an urgent medical appointment, please notify the attendance team in advance.

We expect students to be in the Academy prior to and after an appointment depending upon the time.

Please note - routine dental/medical appointments are not authorised during term time.

The Sandwell Leave of Absence form must be completed 10 days in advance of any time taken off. Holidays are classed as unauthorised and will count towards days absent, they may also result in a Fixed Penalty Notice issued by Sandwell Local Authority.

Only exceptional circumstances will be considered by the Headteacher.

# Attendance and Punctuality

The Academy day starts at 8:45am.

If your child arrives after this time they will be classed as late. Repeat offenders will be sanctioned.

Equates to...	100%	Perfect!
4 days missed	98%	Impressive!
7 days missed	96%	Good!
9 days missed	95%	Nearly there!
11 days missed	94%	Needs to Improve!
20 days missed	90%	Serious Concerns!
30 days missed	85%	Very Serious Concerns!



**Behaviour**

**Respect**

**Business  
Dress**

**Attendance**

**Punctuality**

**Attitude**

“Teachers have strong  
subject knowledge.  
They explain content  
clearly and check  
students’  
understanding well in  
lessons.”

*Ofsted, 2022*

# Transition Days

We look forward to welcoming our new Year 7 cohort to the Academy on **Wednesday 3<sup>rd</sup> and Thursday 4<sup>th</sup> July.**

Students need to arrive no earlier than 8:50am for a 9:00am start, and will be dismissed at 3pm.

Staff will direct students where to go on arrival.

Lunch is provided, but we ask that students bring their own water for throughout the day (they may bring a snack for breaktime too, if they wish). They will also need a pen!

Students should wear active wear (plain t-shirt, shorts, and trainers).



# ParentPay

- ✓ ParentPay is the online payment system through which lunch credit can be added and payments made (for things such as trips, tickets, etc.);
- ✓ You'll be sent login details for how to access this system in September, please ensure you add funds before your child's first day if your child wishes to buy lunch – we do not accept cash.

# ClassCharts

- ✓ In September you will also receive more details on how to access ClassCharts which is the system used for you to track your child's achievements and any sanctions set – it is through this system that you will be notified of any detentions set.

# This evening

- ✓ Please ensure you carefully check that the data we have on file for you is accurate – an email address is especially important, so you can be set up on our online systems.
- ✓ See Macron for sizing and to order Sports Kit (this will be given to students on their first day in September).

# Key Dates

- ✓ Transition Days are 3<sup>rd</sup> – 4<sup>th</sup> July, 9am – 3pm, students wear active wear.
- ✓ The new academic year starts for new Year 7 students on Wednesday 4<sup>th</sup> September, the Academy day is 8:45am to 3:15pm each day.
- ✓ Check our term dates on our website, as an Academy, our dates differ slightly to schools:  
[www.q3academy.org.uk/term-dates](http://www.q3academy.org.uk/term-dates)



“Our children are the rock on which our future will be built, our greatest asset as a nation. They will be the leaders of the country, the creators of our national wealth, those who care for and protect our people.”

**Nelson Mandela**